

Self-Supporting Flat Cable

ID: **ASOI**

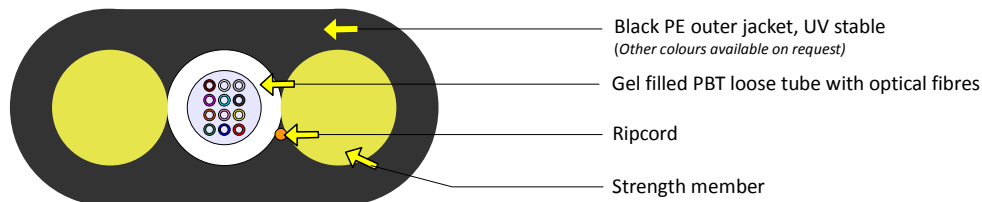


KABELOVNA Děčín Podmokly s.r.o.
Ústecká 840/33, 405 33 Děčín 5
Czech Republic
DIČ CZ26759993
tel.: +420 412 706 222
www.kabelovna.cz

19.10.2016 ver.4

A-D(2ZN)2YT 1×2,0 max. 12F

This cable is suitable for outdoor aerial use or direct burial to sand bed.



Mechanical and Environmental properties

Test	Value	Unit	Method	
Cable outer diameter	4,2 ± 0,4 x 7,8 ± 0,3	mm	EN 60811-203	
Cable weight	36	kg/km		
Outer jacket thickness	1,1	mm		
Loose tube diameter	2	mm		
Thermal expansion coefficient	15,5	ppm/K		
Modulus of elasticity	16,0	Gpa		
Max. allowable tension ODWAC Clamp	2400	N	EN 60974-1-21-E1	
Max. allowable tension HYPOCLAMP Clamp	1600	N	EN 60974-1-21-E1	
Vibration Test	300	Hours	Tested by Telenco	
Crush resistance test	4000	N	EN 60794-1-21-E3	
Impact resistance test	3	Nm	EN 60794-1-21-E4	
Min. bend radius (no load)	120	mm	EN 60794-1-21-E11a	
Min. bend radius (load)	160	mm	EN 60794-1-21-E11b	
Moisture resistance test	pass		EN 609794-1-22-F5	
Temperature range	Installation	-15 to + 50	°C	EN 60794-1-22-F1
	Operation	-40 to + 70	°C	
	Storage	-40 to + 70	°C	

Cable life time - minimum 30 years

Sheat Marking

Print colour	White
Print method	INK-Jet
Print legend	Manufacturer's name, job number, type of cable, length marking @ 1 m intervals

Other print legends available on request

Fibre colour coding

According to IEC 60304

1	Red	7	Brown
2	Green	8	Violet
3	Blue	9	Turquoise
4	Yellow	10	Black
5	White	11	Orange
6	Grey	12	Pink

Other fibre colour sequences available on request

Packing

Depending on ordered put-up lengths

Self-Supporting Flat Cable


ID: **ASOI**

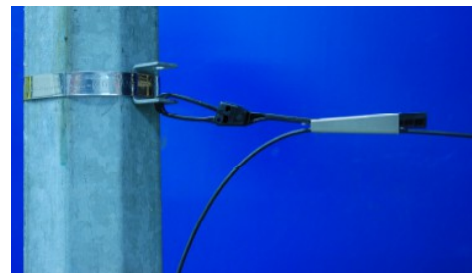
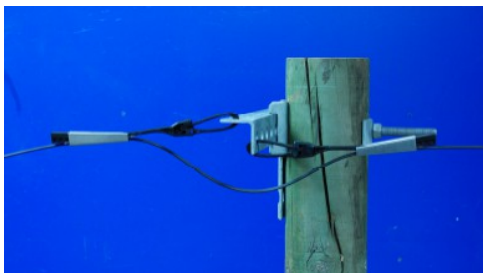
A-D(2ZN)2YT 1×2,0 max. 12F

Installation

For installation of the cable we recommend to use only the clamps Telenco

SPAN (m)	INSTALLATION		NESC LIGHT			NESC MEDIUM			NESC HEAVY		
			sag (m)		load (N)	Sag (m)		load (N)	sag (m)		load (N)
	sag (m)	N	horizontal	vertical		horizontal	vertical		horizontal	vertical	
40	0,6	127	1,04	0,29	737	0,82	1,0	1111	0,82	1,36	1609
60	0,9	184	1,69	0,5	957	1,36	1,66	1471	1,38	2,3	2331
80	1,2	243	2,43	0,73	1180	1,98	2,41	1806			
100	1,5	304	3,22	0,96	1395	2,64	3,22	2119			
120	1,8	365	4,06	1,21	1593	3,34	4,07	2413			
140	2,1	426	4,93	1,47	1787						
160	2,4	486	5,85	1,75	1969						
180	2,7	547	6,79	2,03	2149						

 Only for ODWAC Clamp

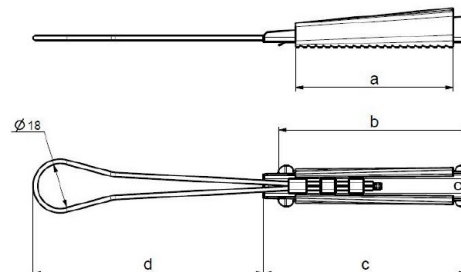


HYPOCLAMP



ODWAC (Telenco code 5126)

Dimensions



ODWAC	a	b	c	d
	70	90	90	110

